

<<OPERATION MANUAL -- VD7 MULTIEYE SERIES>>

<TIME INDICATION>

VD72



VD73



VD74

24 hours



VD75



VD76



VD77

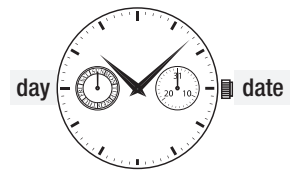
24 hours



VD78

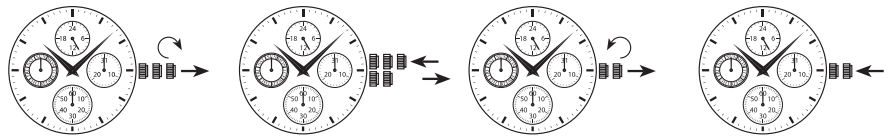


VD79



<TIME SETTING>

**VD72, 73, 74,
75, 76, 79**



1. Pull out the crown to the second click when the small second hand is at the 12 o'clock position.
It will stop on the spot and advance the hour and minute hands by turning the crown.
2. Push the crown back in to the normal position in signal.
Pull out the crown to the first click.
3. Set the date by rotating the crown in counter-clockwise direction (Quick change function)
4. Push the crown back in to the normal position.

Set the day by rotating the hour and minute hands clockwise.

(Check that 24-hour hand is set correctly)

* Do not set the date between 10:00PM and 1:00AM
Otherwise, the day may not change properly. If it is necessary to set the date during that time period, first change the time to any time outside it, set the date and then reset the correct time.

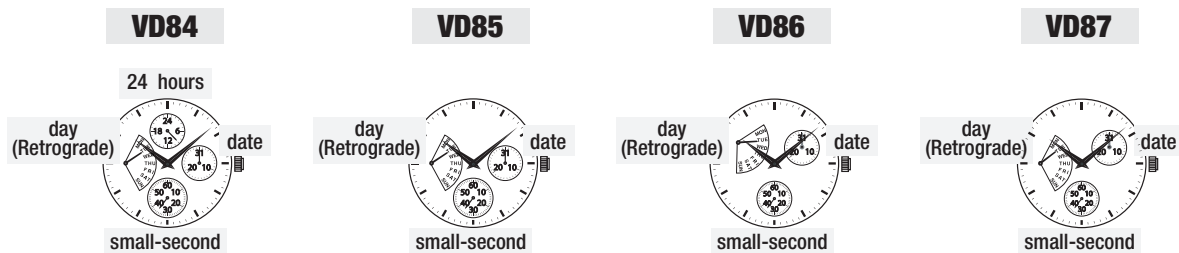
VD77 & VD78



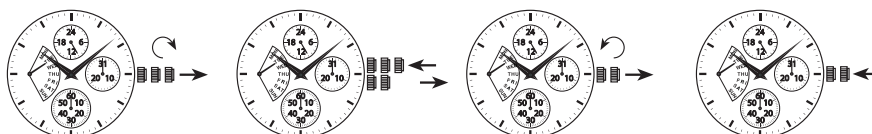
1. Pull out the crown to the first click when the small second hand is at the 12 o'clock position. The second hand will stop on the spot
2. Advance the hour and minute hands by turning the crown.
(Check that 24 hour hand is set correctly)
3. Push the crown back in to the normal position in accordance with a time signal.

<<OPERATION MANUAL -- VD8 RETROGRADE SERIES>>

<TIME INDICATION>



<TIME SETTING>



1. Pull out the crown to the second click when the small second hand is at the 12 O'clock position. It will stop on the spot and advance the hour and minute hands by turning the crown.
2. Push the crown back in to the normal position in signal. Pull out the crown to the first click
3. Set the date by rotating the crown in counter-clockwise direction (Quick change function)
4. Push the crown back in to the normal position.

Set the day by rotating the hour and minute hands clockwise.

(Check that 24-hour hand is set correctly)

- * Do not set the date between 10:00PM and 1:00AM. Otherwise, the day may not change properly. If it is necessary to set the date during that time period, first change the time to any time outside it, set the date and then reset the correct time.

- * The retrograde day of the week can be set more quickly by following procedures:

- (1) Pull out the crown to 2 click position for Day adjustment
- (2) Turn the crown clockwise until the Day advance by one increment
- (3) Turn the crown counterclockwise until the center hands at or before 12:00 position
- (4) Turn the crown clockwise again until the Day advance by one increment
- (5) By repeatedly perform the Steps (3) & (4), the Day hand can be adjusted to the desired position more quickly